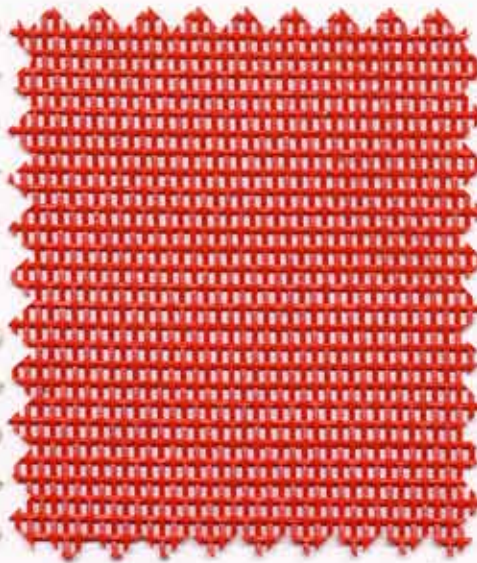
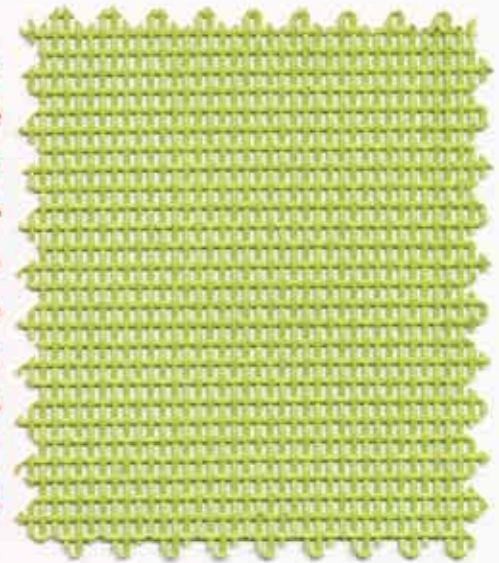




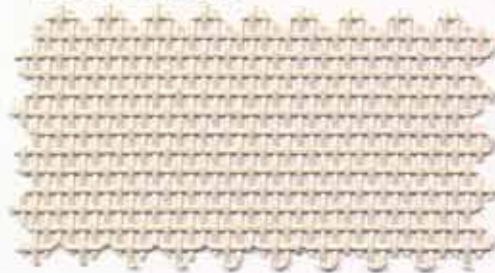
3006847 - White 000



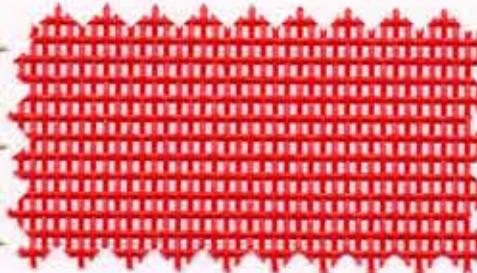
3013953 - Salsa KF3



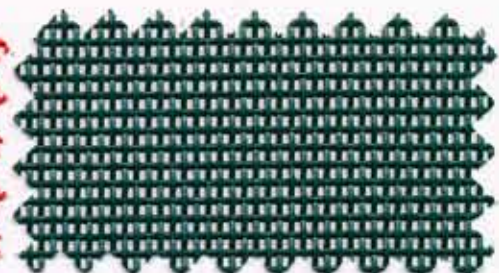
3013954 - Garden Green DC3



3006891 - Grey Sand X00



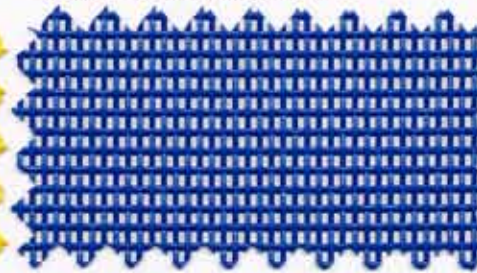
3006888 - Christmas Red M96



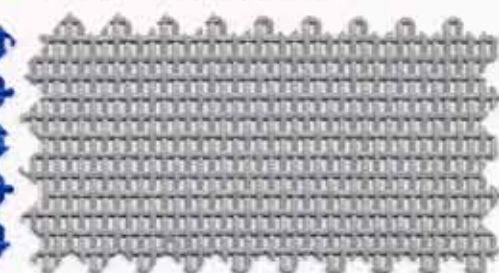
3006865 - Spruce Green C09



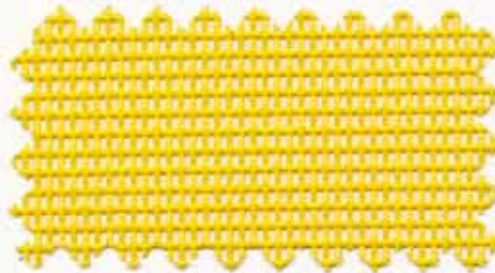
3006851 - Almond I86



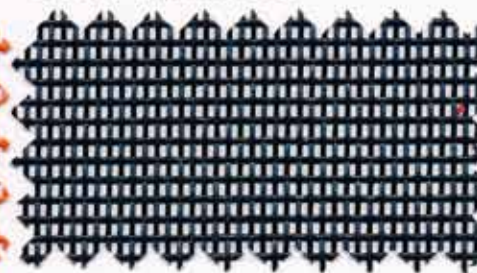
3000050 - Royal Blue G00



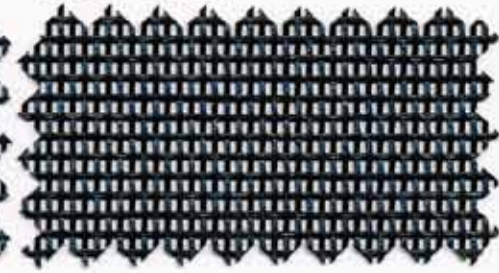
3006898 - Grey X11



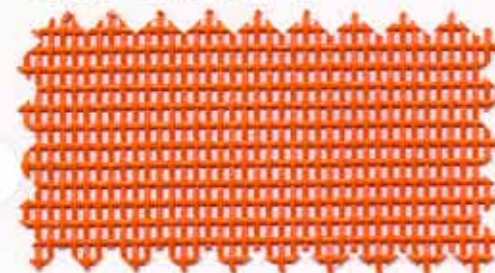
3006855 - Lemon Yellow 406



3006878 - Navy G01



3006894 - Black X04



3006857 - Orange 412

This colorful selection of Phifertex® fabrics are woven for applications limited only by the imagination. These fabrics are rugged enough to handle outdoor applications, enduring even Mother Nature's ever changing moods. Woven with precision, Phifer's coated yarn fabrics have a long and durable life expectancy for an array of applications. Phifer's five decades of commitment to weaving excellence is your assurance that Phifertex fabrics are as reliable as they are innovative to take you wherever your creative expression leads.

PHIFERTEX STANDARD MESH SOLIDS SPECIFICATIONS

Contents: 100% woven vinyl-coated polyester

Weight: approximately 11.3 oz. per square yard

Roll Length: approximately 60 lineal yards

Openness Factor: approximately 35%

Width: 54"

CLEANING INSTRUCTIONS

1. Prepare cleaning solution using 1 tbsp. liquid dish detergent and 2 tbsp. household bleach mixed in a gallon of water. Clean fabric using sponge or soft cloth dipped in solution.
2. Rinse thoroughly with clean water and air dry.
3. Avoid direct contact with oil-based products, which may cause accelerated aging of fabric. If direct contact occurs, clean promptly.
4. Regular maintenance of your Phifertex fabric will ensure an extended life of the fabric. We recommend cleaning the fabric once or twice yearly for moderate use, more for heavy-use applications.

Sailrite Enterprises, Inc.
4506 S State Rd 9
Churubusco, IN 46723
www.sailrite.com
Toll Free (800) 348-2769