



# SAILRITE

Est. 1969

Equipping you to sew at home & on the water

## Aprons

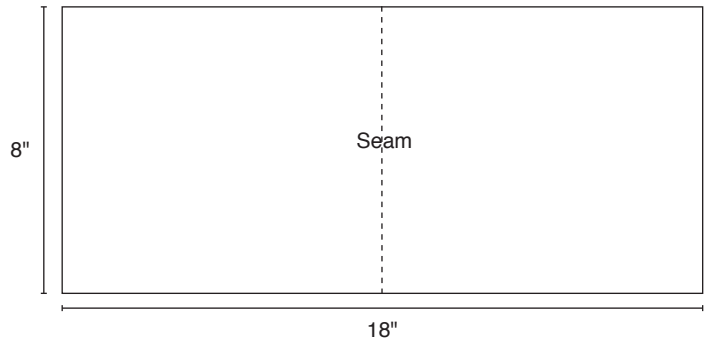
### Instructions & Template

#### Materials Needed:

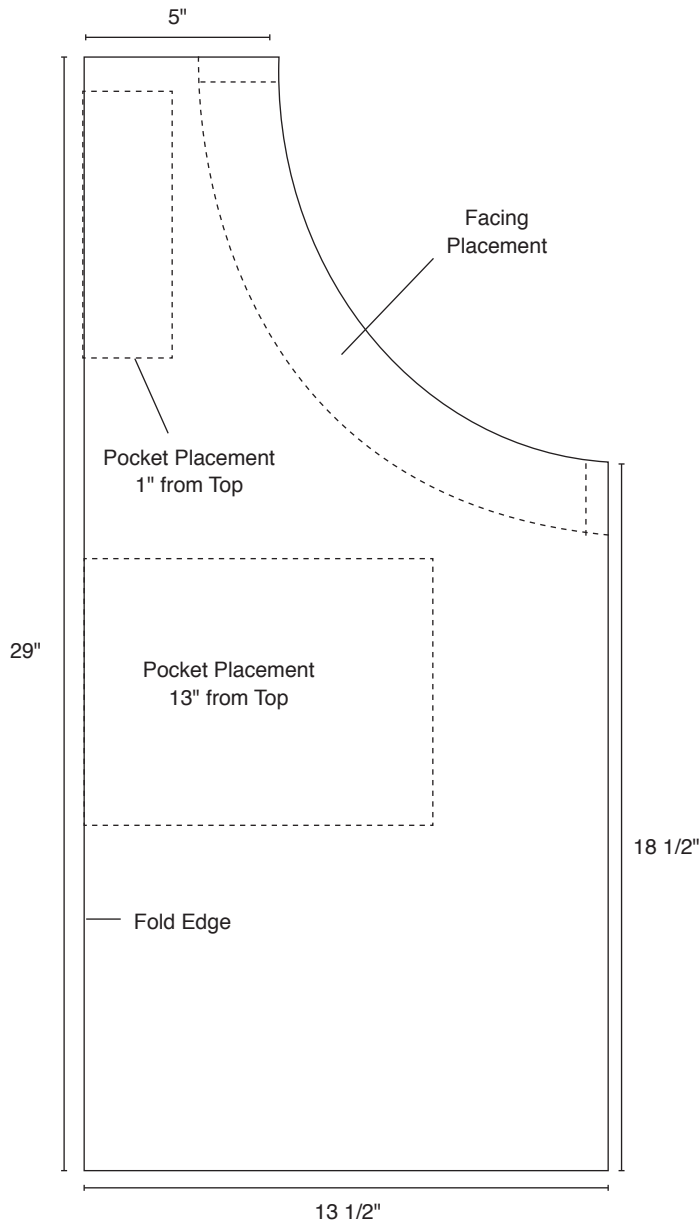
- Fabric: 1 yd. (body) + 1/4 yd. (pocket)
- 13' Binding (Edges)
- 12' Webbing (Tie Cord)



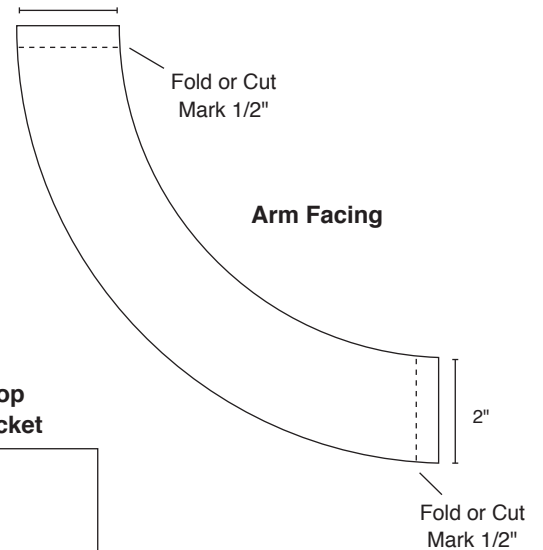
#### Bottom Pocket



#### Body of Apron (1/2)

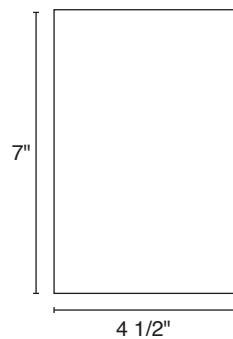


#### 2"



#### Arm Facing

#### Top Pocket



**Sailrite Enterprises, Inc.**  
 2390 East 100 South, Columbia City, IN 46725

**Phone** (800) 348-2769 / (260) 244-4647

**Fax** (260) 818-2005

**Email** info@sailrite.com

**Sailrite.com**

© 2015 Sailrite Enterprises, Inc.