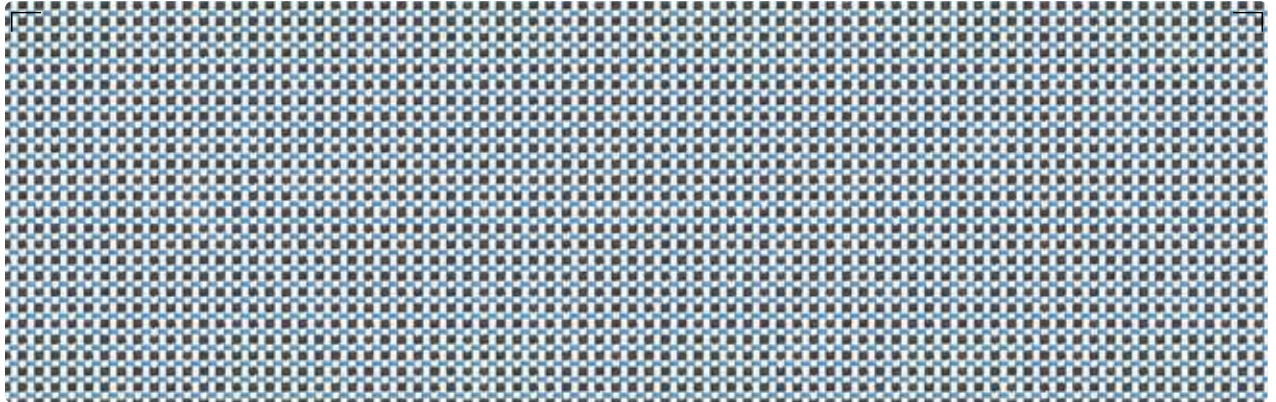


Serge Ferrari

Batyline
Elios

Uniquely soft & ultra-durable
outdoor fabric

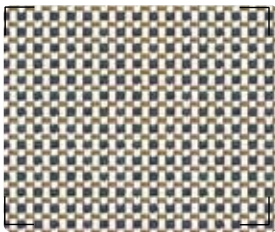




Spring

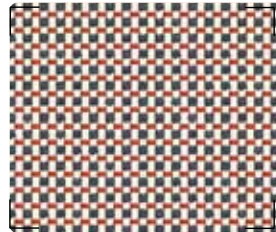
7740-51037

Graphic



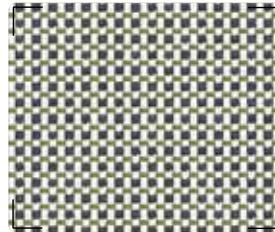
Caramel

7740-51035



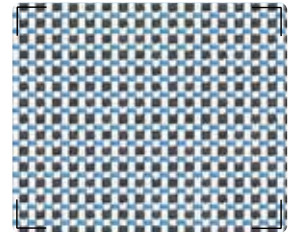
Ladybird

7740-51036



Birch

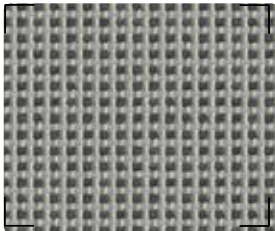
7740-51042



Spring

7740-51037

Sophisticated



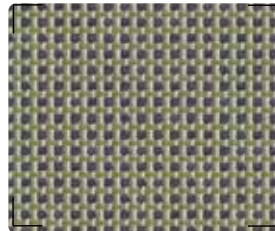
Basalt

7740-51034



Blue jay

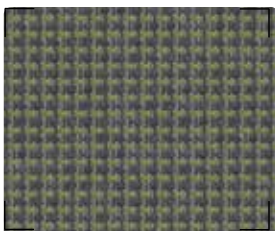
7740-51038



Sparrow

7740-51041

Natural



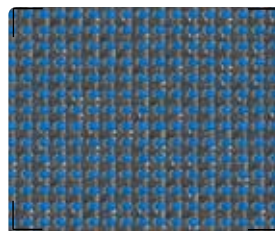
Evergreen

7740-51040



Dark night

7740-51033



Sodalite

7740-51039

Applications:

Indoor & outdoor furniture, upholstery and cushioning for chairs and sofas



- **Uniquely soft:** Elios' patented weave combines Batyline performance and durability with a textured yarn to offer unique softness and high resistance.
- **Exceptional resistance:** Batyline Elios has been subjected to the most stringent tests, guaranteeing its high performance design. It stands up to extreme abrasion, UV and mold.
- **Easy to clean:** Batyline Elios is very easy to clean with everyday household cleaners, allowing you to enjoy your outside furniture with peace of mind in all seasons.
- **Phthalate-free:** Like all Batyline products, Elios is phthalate free, ensuring a healthy, care-free experience.



Inspired by the classic style
of tweed suits

Unique softness with
unparalleled resistance



Batyline

Elios

	■ Technical properties	Standards
Weight	13.3 oz/sqyd (450 g/m2)	EN ISO 2286-2
Width	55.1 in (140 cm)	
Composition*	18% high tenacity polyester yarn 65% PVC 17% flocked yarn	
	■ Physical properties	
Softness	2g	ASTM D5342-D5650
Abrasion resistance**	>600,000 double rubs - Heavy Duty	ASTM D4157 Wyzenbeek
Tear strength (warp/weft)	22 / 15 daN (48/33 lbs)	DIN 53363
Break strength (warp/weft)	160 / 100 daN/5 cm (350/220 lbs/2 in)	ISO 1421
Light stability	GS=4 at 700h / >1,500 QUV	ASTM G154: UVA340
Mold Resistance	Method A, degree 0, excellent	ISO 846-A
Extreme working temperatures	14°F / +158°F	
	■ Flame retardancy	
Rating	Pass	NFPA 260 — CAL TB 117 — IMO MSC.307(88) (2010FTP Code) Annex 1 Part 8
	■ Management systems	
Quality		ISO 9001
Environment		ISO 14001
	■ Certifications, labels, warranty, recycling	
	  	5 year warranty Phthalate free Swiss made Smart Yarn
	■ Tools and services	

- Fabrication guide & cleaning instructions available upon request
- Visualize & play with custom colors and weaves with Serge Ferrari's Penelope Software.

*This material will behave similar to a velvet; fabricate from only one direction off the role. Please review the fabrication instruction manual and video for this product prior to use.

**Multiple factors effect coated fabric durability and appearance retention, including end-user application and proper maintenance. Wyzenbeek results above 100,000 double rubs have not been shown to be a reliable indicator of increased coated fabric lifespan.

† Industrial capacity operational in 2022

Quoted technical characteristics are average values with a +/- 5% tolerance. Our products are subject to improvements resulting from technical developments and we reserve the right to modify their characteristics at any time. The purchaser of our products is responsible for checking the above data.