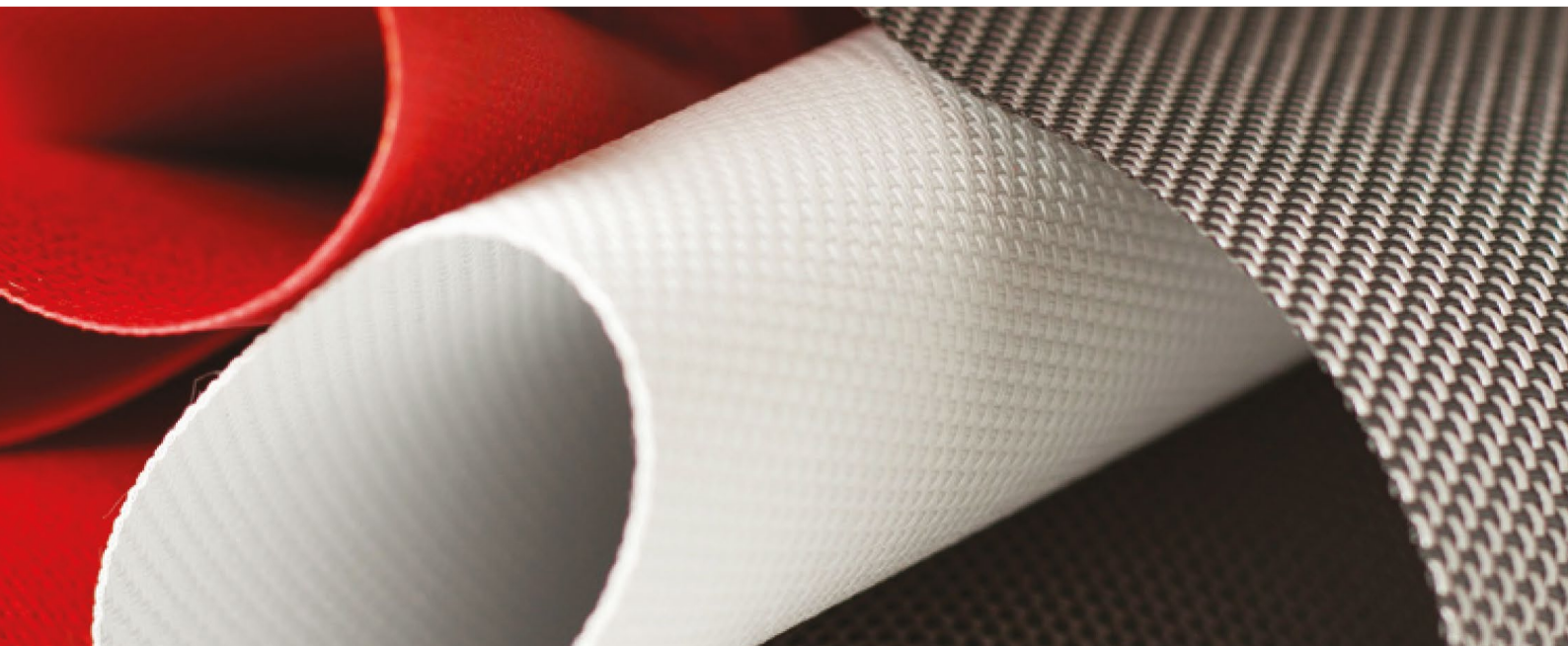


**Serge Ferrari**



Batyline Iso, Duo,  
Keops, Canatex, Eden,  
Lounge, Elios

Maintenance guide

# Contents

<b>I / INTRODUCTION</b>	<b>3</b>
1 - About this guide	3
2 - Application field	3
3 - Conditions of use	3
<b>II / STANDARD CONTROL PROCEDURE</b>	<b>3</b>
<b>III / RECOMMENDED CLEANING PROCEDURE</b>	<b>4</b>
1 - Cleaning procedure	4
a / Dust off the fabric	4
b / Wash	4
c / Rinse thoroughly	5
d / Let the fabric dry off	5
2 - Specific cleaning recommendation for Batyline EDEN	5
3 - Warning	5
<b>IV / LIST OF NON RECOMMENDED CLEANING PROCEDURES AND DETERGENTS</b>	<b>6</b>
<b>V / FREQUENCY OF CONTROL AND CLEANING PROCEDURES</b>	<b>6</b>
<b>VI / STEAM AND CREASE RECOVERY</b>	<b>7</b>

# I / Introduction

## 1 - About this guide

This guide aims at defining:

- Standard control procedures
- Cleaning procedures
- Non recommended cleaning procedures
- Frequency of control and cleaning procedures
- Warranty

## 2 - Application field

Batyline fabrics are meant to be used for outdoor furniture applications:

- garden and terraces chairs
- armchairs,
- sun loungers
- space divisions
- cushions
- ...

Batyline fabrics are specially designed for the upholstery of seats, backrests and cushions and self-supportive seats and backrests (sling).

## 3 - Conditions of use

Batyline fabrics must absolutely be used in the scope of an adapted furniture application considering the technical limits of the textiles. Please check the Serge Ferrari « Batyline Upholstery Confection Guide » for more details.

# II / Standard control procedure

The frequent control procedure consists in visually checking the surface of the textile to ensure the following:

- no visible damage or cut on the textile surface
- no visible Polyester core yarn deprived of the PVC coating on the seams

When one of these signs is observed, please call for a professional to find the adapted solution.

# III / REcommended cleaning procedure

A fabric is considered « soiled » when it shows lasting visible marks. These marks result from the progressive accumulation of little quantities of small particles brought on the surface by air or rainwater.

Other soiling is directly linked to the textile's domestic use (food, beverage...) BATYLINE ISO, DUO, KEOPS, CANATEX, LOUNGE, EDEN and ELIOS fabrics are especially stain resistant for 3 essential reasons:  
- the extruded Batyline yarns with the Smart Yarn Technology have a perfectly smooth surface aspect, non-porous. This means that dirt does not stick to the surface.  
- the BATYLINE fabrics do not keep a lot of static electricity which prevents dust attraction.  
- the PVC extruded coating has a unique formulation. The embedded anti-mold treatment enables a great resistance to micro-organism and moisture.

## 1 - Cleaning procedure:

### a) Dust off the fabric

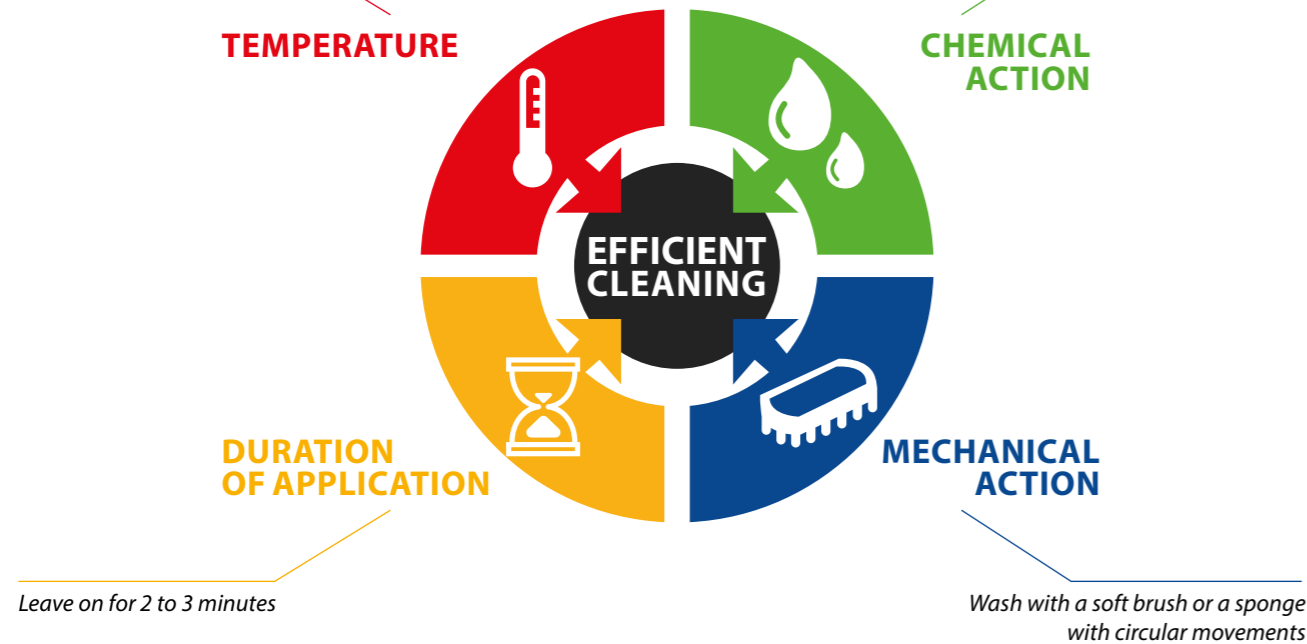
With a vacuum cleaner and a metallic brush, dust off the fabric surface.  
With cushions, please check the possibility to remove the fabric and separate it from the filling.

### b) Wash

With a soft brush/ sponge and the Serge Ferrari « FERRARI Cleaner 500 » or soapy water with the following dosage:

**Light or medium stain:**  
20°C water  
**Strong stain:**  
50°C water

Soapy water or water with diluted detergent:  
**Light stain:** Concentration 5%,  
**Medium to strong stain:** Concentration 10%



If you decide to use another detergent than FERRARI Cleaner 500 or soapy water, always try on the hidden side of the fabric.

### c) Rinse thoroughly

Rinse thoroughly with clear water (do not water spray).

### d) Let the fabric dry off

Let the fabric air dry, flat.



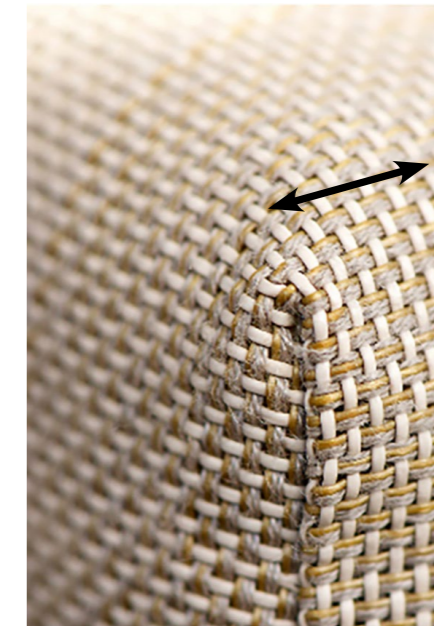
Note: if the textile cannot be separated from a cushion filling, the cleaning procedure can be done in a washing machine with a maximum temperature of 40°C and a moderate spin.

## 2 - Specific cleaning recommendation for Batyline EDEN

When cleaning the Batyline Eden fabric, it is important to brush the product in the direction of the acrylic yarn in order not to damage it.



Brush in the weft direction, following the acrylic yarn



## 3 - Warning

Some stains may be difficult to clean off following the cleaning procedure described above. This procedure may not work and the nature of the stain may end up requiring the use of products which will destroy the fabric. Before making that decision on your own, it is important to evaluate the necessity of that operation. Please call for the help of a specialist.

Example: vandalism of furniture pieces with graffiti in public areas

## IV / List of non recommended cleaning procedures and detergents

As a general note, the use of solvents or abrasive cleaning procedures is forbidden. The resistance of Batyline textiles to chemical attacks depends on many factors such as: nature of the chemical agents (solid, liquid, or gaseous), temperature, concentration, contact duration. In certain cases, a mix of components can engender a negative result when each component taken separately is ok.

For that matter, the following is forbidden:

- cleaning procedures such as:

. Abrasive products of all kind like abrasive detergent powders, pastes, liquids, sponges...

. Pressurized water (Karcher).

- use of organic products such as:

. Acetone, fuel, benzene, gas oil, fossil fuel, perchlorethylene, turpentine, toluene, trichlorethylene, petroleum.

- use of non organic chemical products such as:

. ammonia, nitric acid, sulfuric acid, hydrochloric acid, soda, caustic soda, bleach (possible with a certain concentration, please contact us for more information).

## V / Frequency of control and cleaning procedures

The frequency and nature of control and cleaning procedures depends on:

- the frequency of use of the furniture elements
- the degree of exposure of the furniture pieces to outdoor conditions
- the vertical or horizontal position of the fabric
- the degree of exposure of the fabric to dust

Depending on the exposure degree to these parameters, the recommended frequency of checking and cleaning procedures stands from 1 month to 1 year.

Note: an immediate checking or cleaning procedure may be necessary following a sudden incident. For instance, to maintain a fabric clean, sunscreen, wine, coffee etc stains need to be cleaned right away. Please follow the stain guide to know the cleaning procedure.



**ALWAYS TRY TO  
REMOVE THE STAINS  
AS QUICKLY  
AS POSSIBLE!**

## VI / Steam and crease recovery



To uncrease the Batyline Elios fabric, we recommend using a steamer. Apply the steamer 10 cm away from the product and then brush it with a soft brush.

Do not iron the Batyline products, this would cause irreparable damage.

**Serge Ferrari** 

Contact

Headquarter: + 33 (0)4 74 97 41 33  
[www.sergeferrari.com](http://www.sergeferrari.com)